

# Hi-CPS

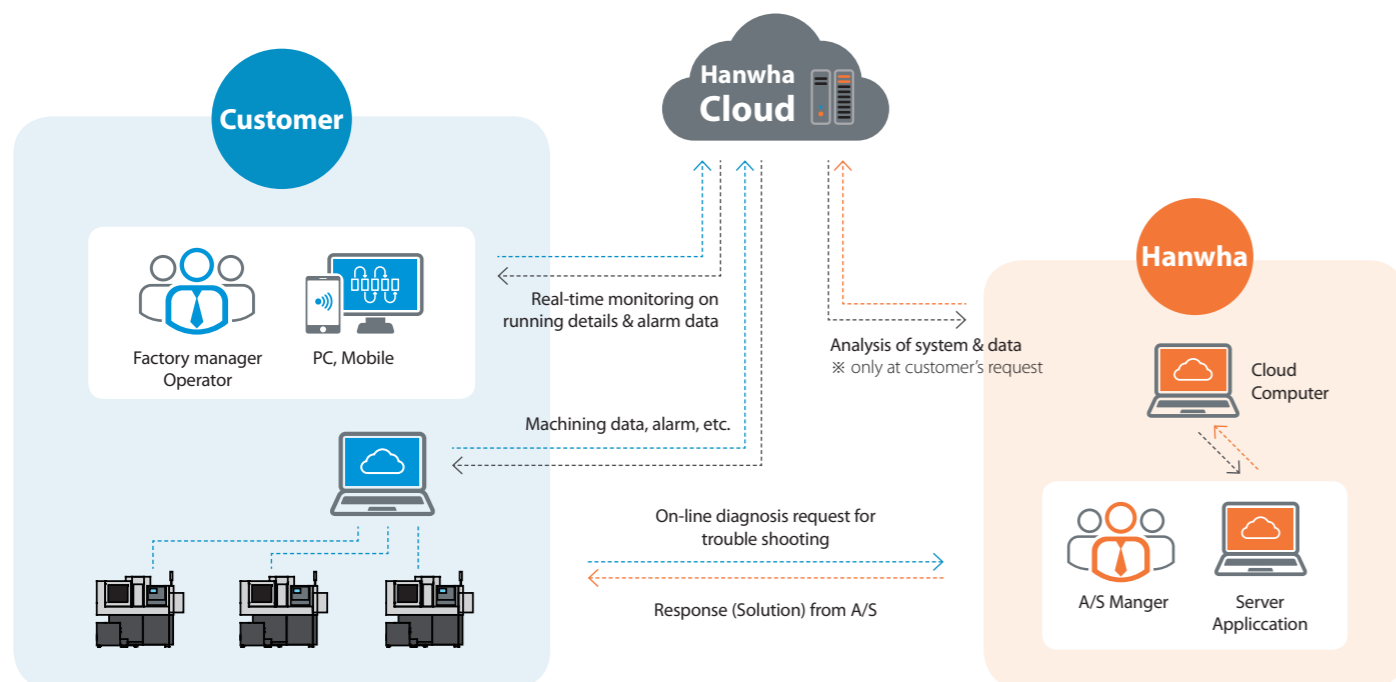
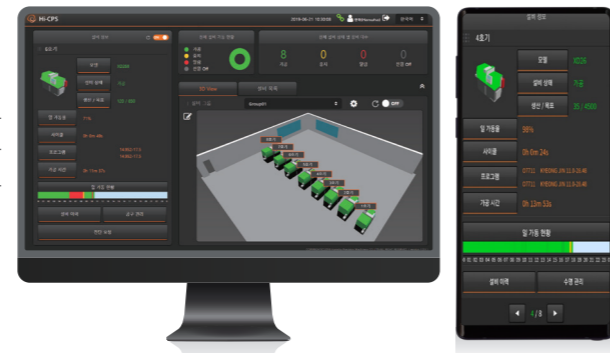
## Hanwha Intelligence CNC Prognostic System



Hi-CPS is a kind of smart factory solution to enable customers to manage factory in a smart & convenient way by providing real time onitoring on running status of machines at the facility. It is a cloud-based system so that one can access with ease from anywhere through internet.

### Function

- 1 Monitoring**
  - Monitors machine operation status from PC & Mobile
  - Check machining, repair, alarm, cycle time, etc.
- 2 Diagnosis**
  - Remotely examines alarmed machines at user's online request
  - ※ Only at customer's request, relevant machine data will be auto-transferred to Hanwha for analysis
- 3 Prognosis**
  - Analyzes cutting load, tool change and offset



# PCR / PCRS & Oscillation

## Chip breaking solution



Hanwha provides chip cutting solution to break long and curled chips into small pieces through macro program.

### Advantage

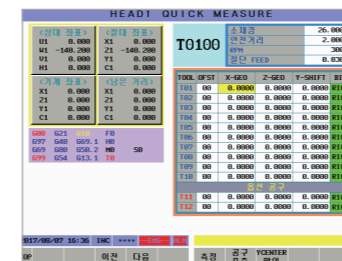
- Better tool life
- Build-up edge free
- Chip trouble free
- Coolant usage saved



Model	PCR	PCRS	Oscillation
NC	FANUC 32i-B	SIEMENS 828D/840D	Fanuc 0i-TD / 0i-TF / 32i-B
Front turning	●	●	●
Back turning	●	●	●
Back drilling	Fixed drills	●	Fixed drills
Taper	●	●	45° angle
Circular interpolation	●	●	●
Synchronous control	●	●	x
Threading	●	●	x
Nose R compensation	x	●	x

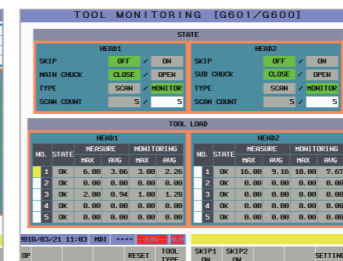
# Customer & Performance Supporting Function

Hanwha offers various software for enhancing machining performance & supporting customer's convenience.



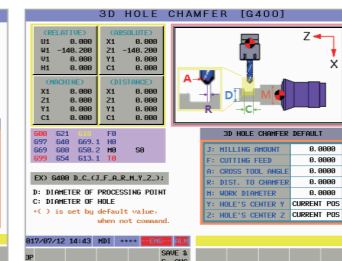
**Quick Measuring Setting time reduce system**  
Supports tools setting with minimal control and none of screen change

**Collision Protection**  
Easy setting of value to protect collision before occurring



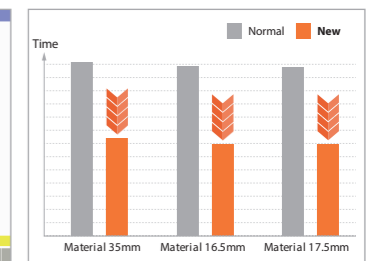
**Tool Load Monitoring**  
Alarms when abnormal load on tools are detected

**M7**  
Single code to command cut-off of material



**3D Chamfer Solution**  
Uniform chamfer machining on cross hole with input of single code

**G301**  
Single code to set the position of Z2-axis for cut-off of material



**Motion Optimization C/T reduce system**  
Reduces cycle time by minimizing unnecessary motion (non processing time)

**Help function**  
Provides description & graphic information about codes & alarms with